

A Brief Introduction to WNTI and the Small Grant Program



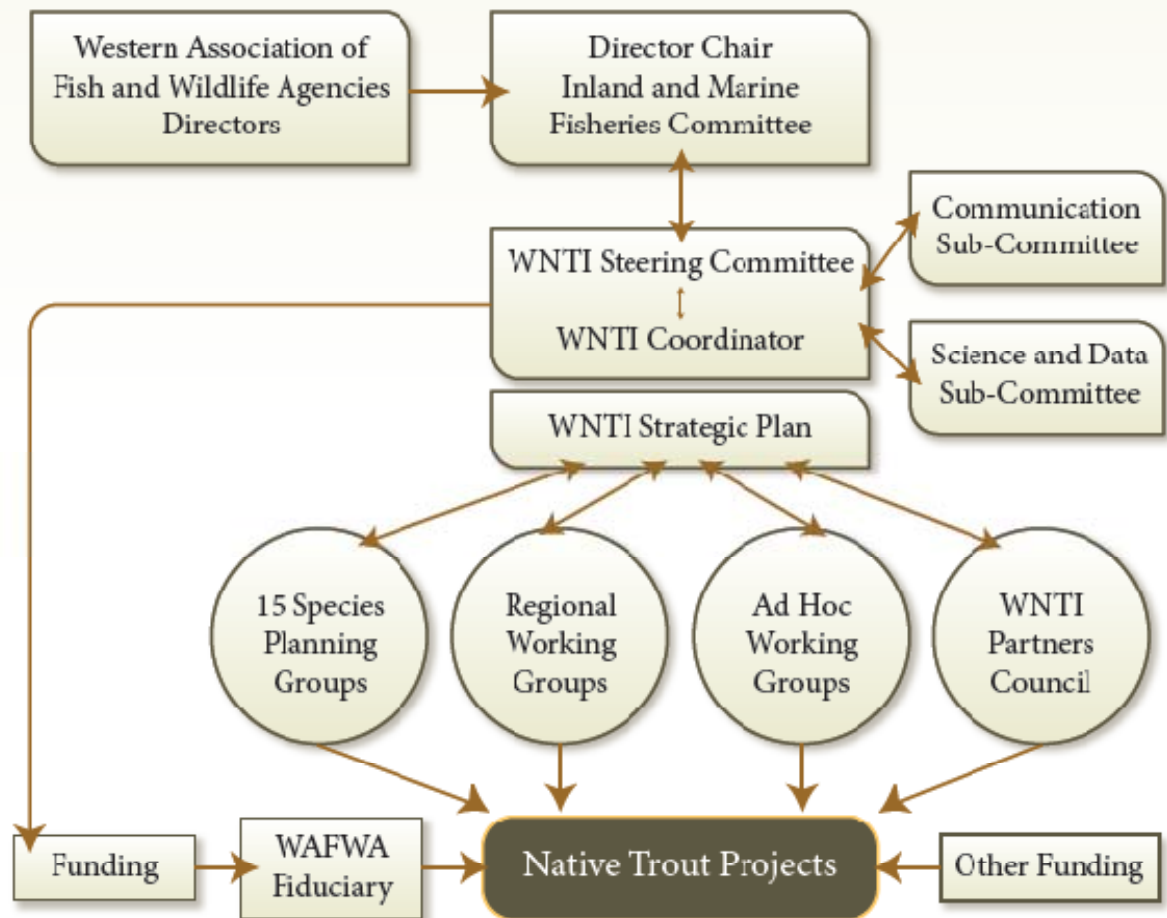
Warren Colyer
Watershed Programs Director
Trout Unlimited

A close-up photograph of a trout's head, focusing on its eye and the scales on its face. The eye is large and dark, with a bright reflection. The scales are detailed and have a golden-brown hue. The background is a soft, out-of-focus mix of warm colors like orange, yellow, and red.


WNTI's Mission is...

...to serve as a catalyst for the implementation of conservation or management actions, through partnerships and cooperative efforts that result in improved species status, aquatic habitats, and recreational opportunities for native trout anglers.



WNTI Organizational Structure




WNTI Species in AZ and NM



Apache Trout
Oncorhynchus gilae apache



Gila Trout
Oncorhynchus gilae gilae



Rio Grande Cutthroat
Oncorhynchus clarkii virginalis



Colorado River Cutthroat Trout
Oncorhynchus clarkii pleuriticus



WNTI/NFHAP Grant Program

- ~\$650K to award (NFHAP)
- Individual awards \leq \$100K
- RFP in June/July; deadline Oct. 1
- Strict eligibility requirements
 - Must be habitat-related
 - Must have native species focus
- Requires close coordination with state/federal fish and wildlife agencies

NEW WNTI Small Grant Program

- \$15K to award
- Individual awards \leq \$3,000
- RFP in April/May; deadline July 1
- Loose eligibility requirements
 - Must have native species focus
 - Permitting/compliance must be complete
- Intended to encourage local watershed and community groups, schools, TU chapters, etc.

Small Grant Project Ideas



Workshops



Volunteer trainings/work days



Monitoring



Field trips/youth education



Habitat improvement/protection

<http://www.westernnativetrout.org/>

The screenshot shows the homepage of the Western Native Trout Initiative. The header features a navigation menu with links for Home, About WNTI, What Are Western Native Trout?, Projects, News, Partners, and Donate, along with a Workspace button. The main content area is divided into several sections: a search bar, a newsletter sign-up form, a login form, and three featured articles. The first article is titled 'The Western Native Trout Initiative' and describes the organization's mission. The second article is titled 'JACKSON HOLE ONE FLY FOUNDATION AND NATIONAL FISH AND WILDLIFE FOUNDATION CONSERVATION PARTNERSHIP STREAM IMPROVEMENT PROGRAM REQUEST FOR PROPOSALS—Spring 2011' and details a conservation partnership. The third article is titled 'A Plan for Strategic Action' and discusses the development of a strategic plan. A map of the western United States is shown with a callout for the 'Bear Wallow Creek' project.

WESTERN NATIVE TROUT INITIATIVE

Home About WNTI What Are Western Native Trout? Projects News Partners Donate Workspace

Search this site:

WNTI Newsletter
Sign up for funding opportunities and project updates

Email: *

Subscribe
 Unsubscribe

Username: *


Password: *

[Create new account](#)
[Request new password](#)

The Western Native Trout Initiative

The information about the Western Native Trout Initiative - who we are, what we do, how you can help - has been refreshed and updated. We hope that the information provided here will be helpful to you, and that you will leave your visit here with a greater understanding of the opportunities and challenges that confront western native trout and those who seek to improve their status.


The Mission of the Western Native Trout Initiative (WNTI as we call it) is to serve as a key catalyst for the implementation of conservation or management actions, through partnerships and cooperative efforts, that result in improved western native trout status, improved aquatic habitats, and improved recreational opportunities for native trout anglers.



JACKSON HOLE ONE FLY FOUNDATION AND NATIONAL FISH AND WILDLIFE FOUNDATION CONSERVATION PARTNERSHIP STREAM IMPROVEMENT PROGRAM REQUEST FOR PROPOSALS—Spring 2011

The Jackson Hole One Fly Foundation Board (JHOFF) and the National Fish and Wildlife Foundation (NFWF) have entered into a conservation program partnership to co-fund stream improvement/native cutthroat trout conservation (protection, restoration, and enhancement) projects. We are requesting proposals for spring 2011 projects from eligible governmental, Tribal or non-governmental organizations. All proposed projects must advance the Jackson Hole One Fly Foundation and the National Fish and Wildlife Foundation's missions of conservation of native trout and their habitat watersheds and must meet the specific criteria outlined below. Preference will be given to projects in the tributaries and main stem Snake and Yellowstone basins of Idaho, Wyoming and Montana, and Upper Colorado basin, especially those that have been ranked as high priority by the Western Native Trout Initiative. Other native trout habitat conservation projects in the intermountain west may also be considered as funds allow.

Get a bird's eye view of trout restoration projects in your area.



Bear Wallow Creek
Bear Wallow Creek renovation between old fish barrier on U.S. Forest Service lands and new fish barrier constructed in 2007 on the San Carlos Apache Indian Reservation.
[View This Project](#)

A Plan for Strategic Action

WNTI members across the West have worked together to develop A Plan for Strategic Action, establishing strategic goals, objectives and actions - and an approach that includes increased coordination

